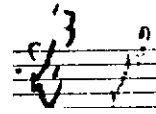


Handwritten musical notation in staff notation, featuring lyrics in Turkish. The notation includes various musical symbols such as notes, rests, and bar lines. The lyrics are written above the notes.

Lyrics: *Pan za ma cüm güx sü ren lür*
lür e man el e man ey
Fah ri i lür el e man
Ru zi mah ser de lü ze ey
le me ded Al la hüm me
sal li a la Hu ham med

30. XII. 947



C. Hüseyinî